

# PDM Builder

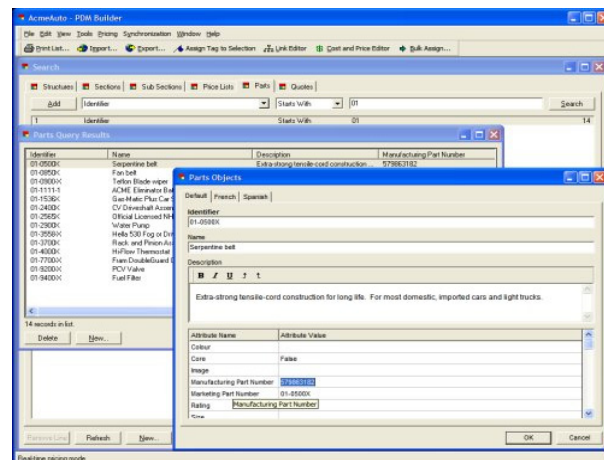
PDM Builder is a versatile product information and pricing management system, designed to provide a flexible and adaptable platform for a range of sales support functions, with little technical intervention. PDM Builder performs Product Information Management, Pricing, Part List Management, Catalogue Management, and supports a number of additional applications with Pricedex tools and modules. PDM Builder is designed to be operated and configured by non-technical users for most of its functionality.

## Configurable and Adaptable Product Information Management

PDM Builder supports the management of a wide range of Product Information, including Static and Dynamic Costing and Pricing, Multiple Product Hierarchies, Multilingual and Multiple Currencies, Sales Channel Matrices and Profiles, unlimited part and product attributes, and much more. Adding attributes, rules and changes to the data environment can be performed 'on-the-fly' without additional programming.

## Powerful Scripting Engine

The PDM Builder product information system makes extensive use of scripting to perform advanced calculations and to call remote procedures. This enables a wide range of conditional functions to be written and performed by the users, without elaborate algorithms.



## Extensive Publishing Capabilities

PDM Builder has a flexible and powerful Publishing and Reporting Engine directly incorporated into the application, which publishes to myriad data formats including PDM Explorer files, Post Script, and to report templates. Using Pricedex eReports, dynamic business intelligence reporting can be distributed across the intranet. The PDX XML Export utility enables direct XML output. The publishing engine also integrates with a number of cross-media, complex publishing systems for automated, end-to-end publishing of Parts Manuals, Price Books, Service Manuals, Product Catalogues, and other product-related publications and reports.

## Extensibility and Integration

PDM Builder has extensive Import and Export Wizard utilities to enable rapid creation of data interchange formats, and uses Microsoft utilities for scheduling batch procedures. PDM Builder interfaces with other applications and data using COM, CORBA, ODBC, Script and other common protocols, as well as directly to thin client applications using the PDX-Web Interface platform.

## Technical Facts

- Client-Server / Standalone Versions
- Multi-tiered COM application
- Integrated Scripting and Reporting
- Win 2000 Compliant