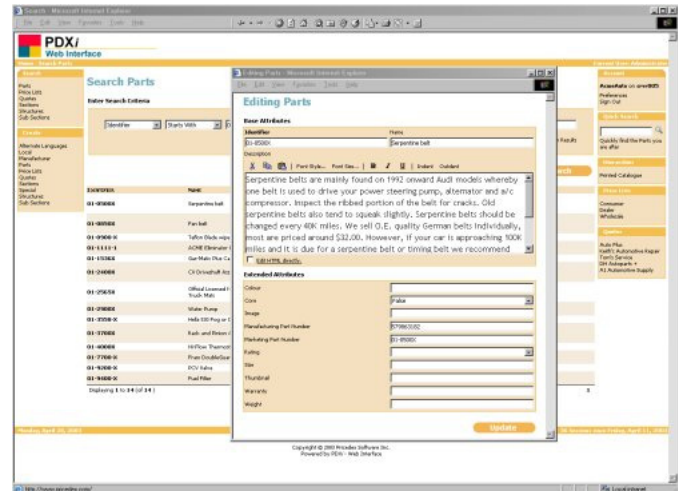


# PDX/-Web Interface



PDX/-Web Interface is a set of tools designed to bring the functionality of PDM Builder to the web, in a thin client format. PDX/-Web Interface enables a collaboration environment for a wide number of functions related to part, price and product management. The toolkit enables rapid configuration and deployment of web-based applications and interactive, dynamic catalogues.

## Configure Applications and Reuse Components using Microsoft Standards

PDX/-Web Interface is built upon the PDM Builder open API architecture, which is a COM-based read/write environment, and uses Active Server Pages to dynamically display and receive information to and from intranets and extranets. Content and structure are managed in the PDM Builder environment, ensuring high reusability of the Active Server Pages configured.

## Dynamic Information

The PDM Builder product information system stores and maintains all information for use in applications configured with PDX/-Web Interface, including User Access profiles which determine what content can be viewed or used by whom. This also enables localized content to be dynamically displayed based upon a User Profile.

## Extensibility and Integration

Using COM, Script and other common protocols, applications configured on the PDX/-Web Interface platform can easily interface, interoperate and communicate with other applications.

## Comprehensive Help, Documented API

Comprehensive help and a documentation on the API, with example functions, are included with the product license.

## Example Functions Included

- Secure and Non-Secure Logon
- Price Book Load / Display
- Parametric Catalogue Search
- Search Results Display Page
- Part/Price Search / Display
- Part/Price Entry / Edit
- Dynamic Price Calculation

## Technical Facts

- COM Architecture
- Microsoft IIS and ASP



a: Brockville, Ontario Canada  
 e: marketing@pricedex.com  
 w: www.pricedex.com  
 t: +1 613.341.9200  
 f: +1 613.345.3660